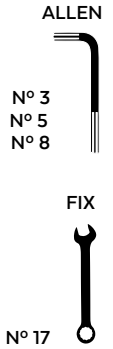


PIAGGIO VESPA GTS 125/300 '23-

M O U N T I N G I N S T R U C T I O N S

REF 21769

GTS TOURING WINDSHIELD



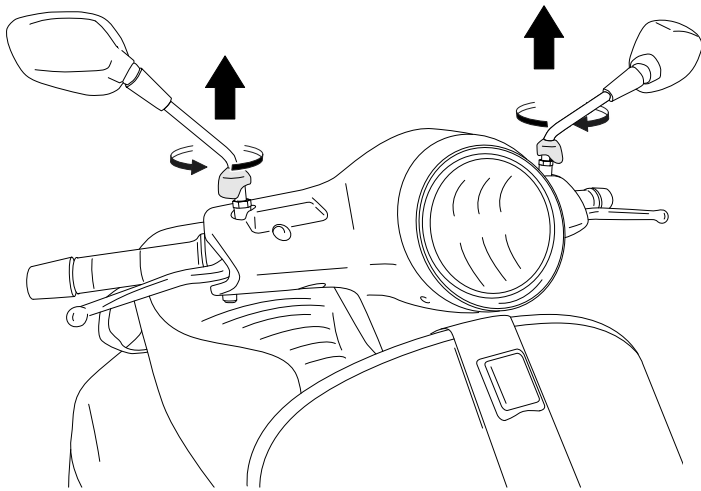
ID.	PIEZA/PART	DESCRIPCIÓN	DESCRIPTION	QTY.	REF.:
1		Cúpula TOURING	TOURING screen	1	10976W/HM3
2		Soporte Izquierdo superior	Upperleft support	1	SOPOR4P6UL21769
3		Soporte derecho superior	Upper right support	1	SOPOR4P6UR21769
4		Soporte Izquierdo inferior	Lower left support	1	SOPOR4P6LL21769
5		Soporte derecho inferior	Lower right support	1	SOPOR4P6LR21769
6		Arandela Grower M6 DIN 127 (negra)	M6 DIN127 washer (black)	2	ARAND-D127--528
7		Arandela M6 DIN125 (negra)	M6 DIN125 washer (black)	2	ARANDEPD125-054
8		Casquillo Ø10,5xØ16 x30mm	Ø10,5xØ16x30mm Arrowhead	2	CASQUI-----557
9		Tornillo M10x50 DIN912 (paso 125, izquierda)	M10x50 DIN912 screw(Pitch 125, left thread)	1	TORNI-D912-915
10		Tornillo M10x50 DIN912 (paso 125, derecha)	M10x50 DIN912 screw(Pitch 125, Right thread)	1	TORNI-D912-916
11		Tuerca autoblocante M10 (paso125, izquierda)	M10 locknut(Pitch 125,Left thread)	1	TUERCA-----810
12		Tuerca autoblocante M10 (paso 125, derecha)	M10 locknut(Pitch 125,Right thread)	1	TUER-D985.6-843
13		Tornillo M6x65 DIN912	M6x65 DIN 912 screw	2	TORNI-D912-474
14		Cilindro Roscado	Threaded Cylinder	2	CASQUI-2P---873
15		Cilindro Pasante	Through Cylinder	2	CASQUI-2P---873
16		Silentblock Ø9xØ6x8mm	Ø9xØ6x8mm silentblock	4	AROPASACABLES-3
17		Casquillo con valona Ø12xØ6,8x7,3	Ø12xØ6,8x7,3 bush with flange	4	CASQUI-1A---750
18		Tornillo allen M5x16 Ø11 ISO 7380	M5x16 Ø11 ISO 7380 allen screw	4	TORNI-I7380-493
19		Tapón tornillo M5 ISO 7380	M5 ISO 7380 screw cap	4	TAPON-----85
20		Arandela M10 NF 25511	M10 NF 25511 washer	2	ARAND-----804
21		Tapón tuerca M10	M10 nut cap	2	CAPERUTM10--008
22		Tapón M10 DIN 912	M10 DIN912 screw cap	2	TAPA--CHC10800E

PIAGGIO VESPA GTS 125/300 '23-

INSTRUCCIONES DE MONTAJE - MOUNTING INSTRUCTIONS - MONTAGEANLEITUNG

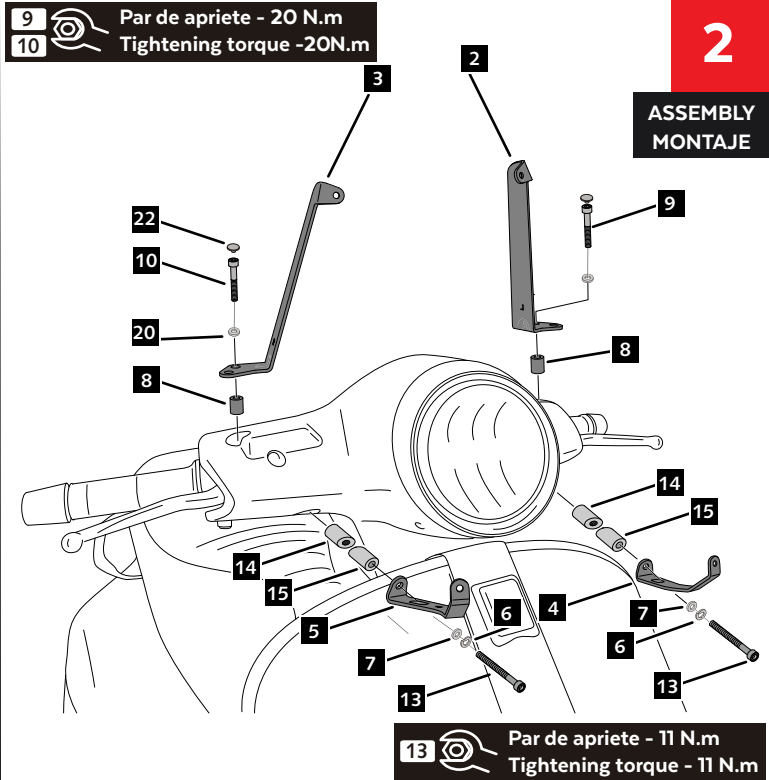
1

**DISASSEMBLY
DESMONTAJE**



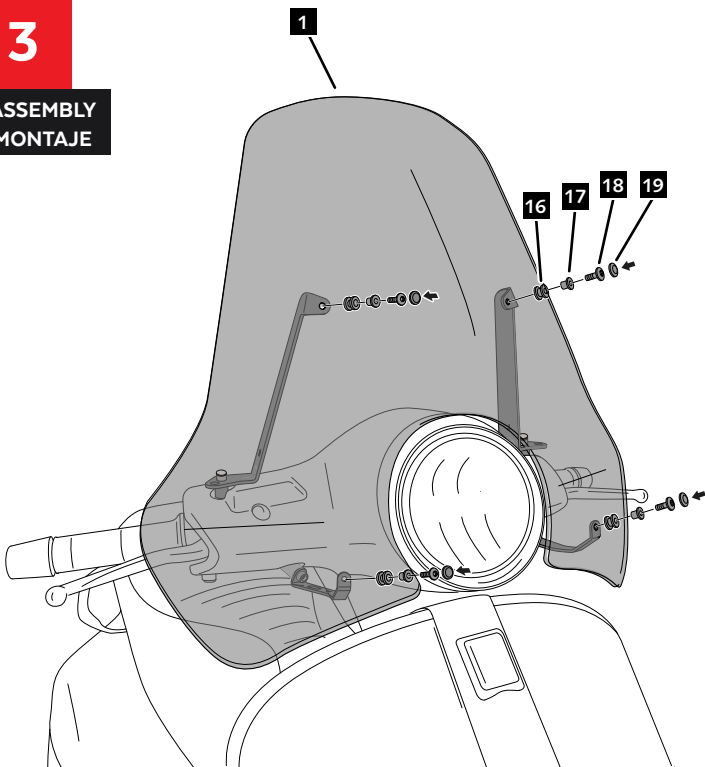
2

**ASSEMBLY
MONTAJE**



3

**ASSEMBLY
MONTAJE**



4

**ASSEMBLY
MONTAJE**

