

# SUZUKI GSX 8S '23-

## M O U N T I N G I N S T R U C T I O N S

REF 21704

**DOWNFORCE NAKED FRONTAL SPOILER**



1 Person



20 min



EASY



PHILLIPS



ALLEN



Nº 3  
Nº 4

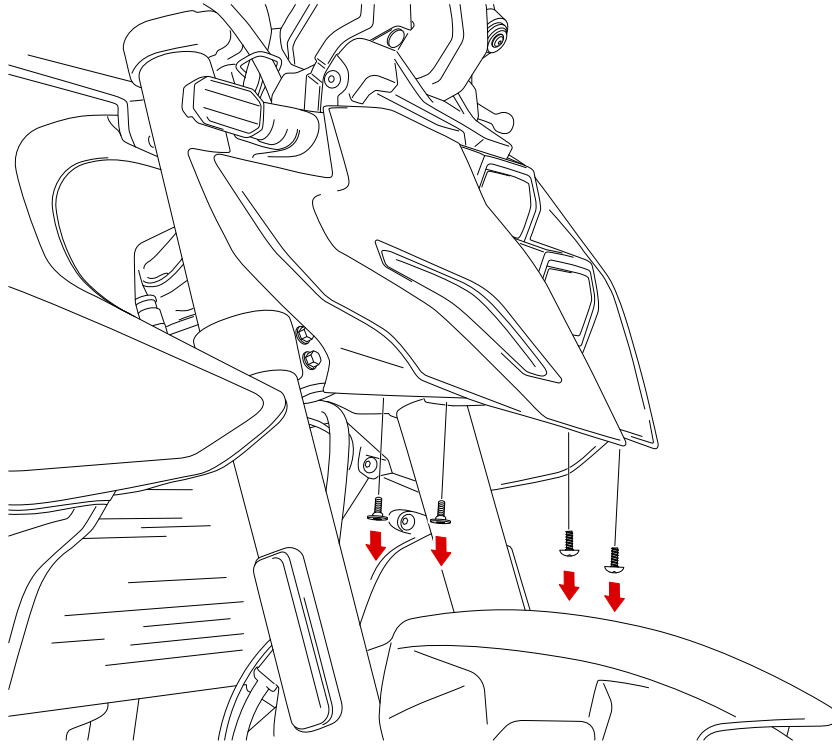
ID.	PIEZA/PART	DESCRIPCIÓN	DESCRIPTION	QTY.	REF.:
1		Aleron frontal naked	Naked frontal spoiler	1	21704JM3
2		Soporte de aluminio	Aluminum support	1	SOPORIP5--21704
3		Arandela de goma Ø4,5 x Ø11 x 2mm	Ø4,5 x Ø11 x 2mm rubber washer	2	ARAND-EPDM--722
4		Tornillo M5x12 DIN7991	M5x12 DIN7991 screw	2	TORNI-D7991-611
5		Tapón tornillo M5 DIN7991	M5 DIN7991 screw cap	2	TAPON-----92
6		Silentblock Ø12xØ6x9	Ø12xØ6x9 silentblock	4	AROPASACABLES-1
7		Casquillo con valona Ø12xØ6,8x7,3	Ø12xØ6,8x7,3 bush with flange	2	CASQUI-1A---750
8		Tornillo allen M5x25 Ø11 ISO 7380	M5x25 Ø11 allen screw	2	TORNI-I7380-766
9		Casquillo NYLON Ø8,3xØ12 x15	Ø8,3xØ12 x15 nylon arrowhead	2	CASQUI-----914
10		Tornillo Ø5x40 DIN7505/B ( punta forma F)	Ø5x40 DIN7505/B screw	2	TORNI-D7505-913
11		Arandela de nylon M5	M5 Nylon washer	2	ARNV00000000245

# SUZUKI GSX 8S '23-

INSTRUCCIONES DE MONTAJE - MOUNTING INSTRUCTIONS - MONTAGEANLEITUNG

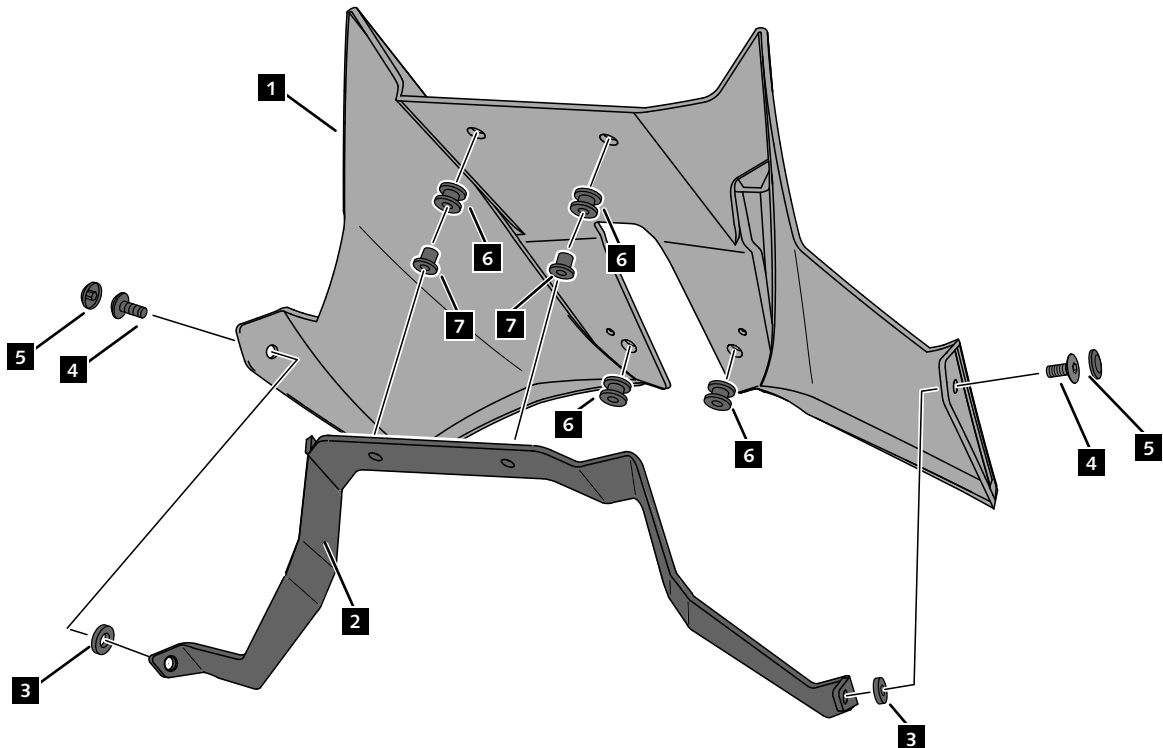
**1**

**DISASSEMBLY  
DESMONTAJE**



**2**

**ASSEMBLY  
MONTAJE**

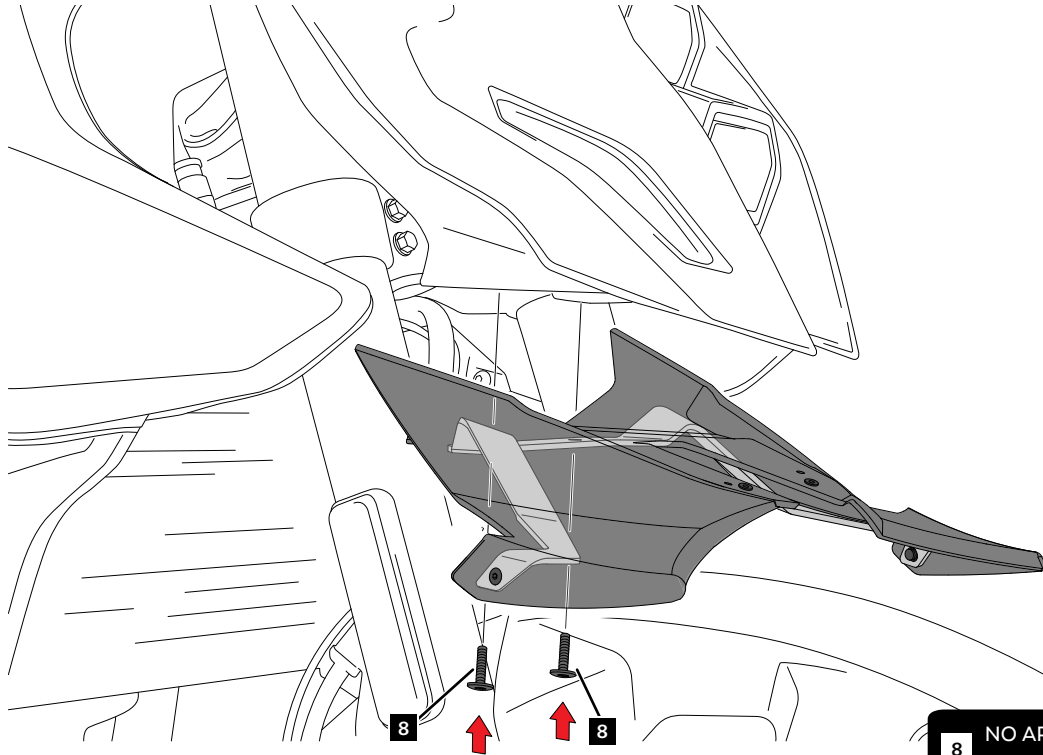


# SUZUKI GSX 8S '23-

INSTRUCCIONES DE MONTAJE - MOUNTING INSTRUCTIONS - MONTAGEANLEITUNG

**3**

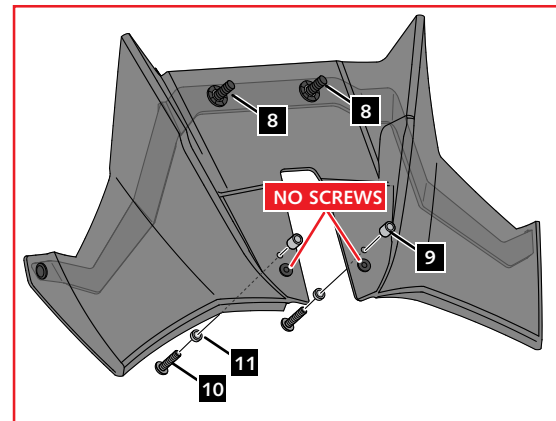
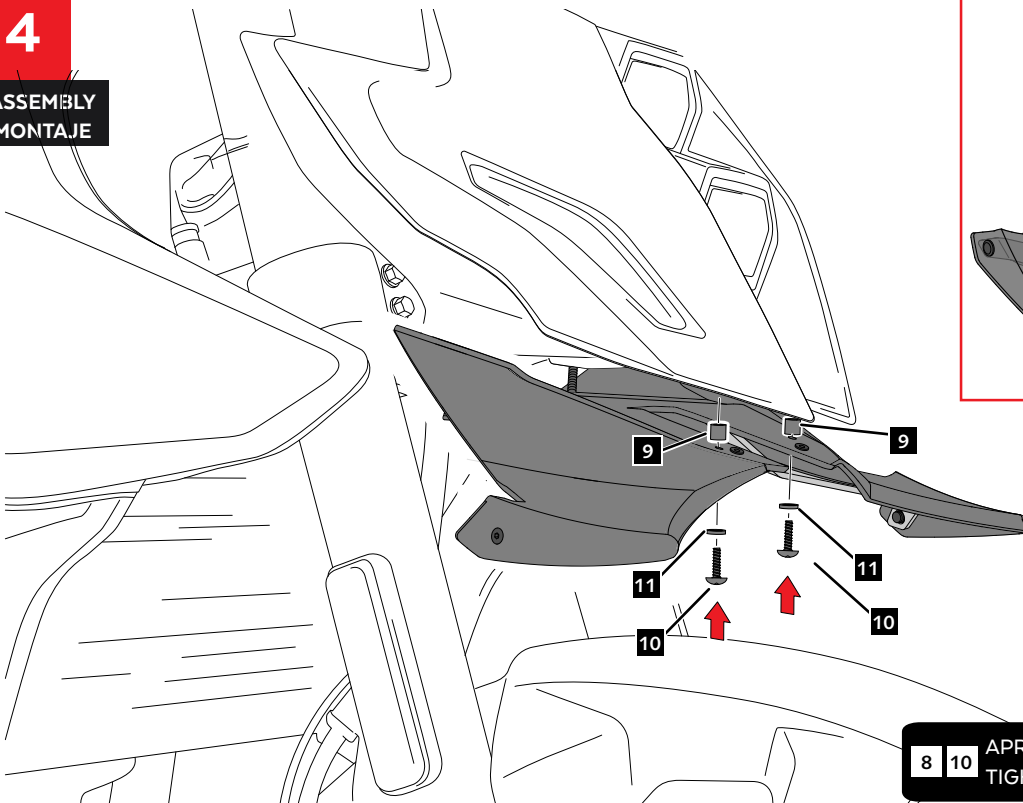
ASSEMBLY  
MONTAJE



**8** NO APRETAR TORNILLOS ID8  
DO NOT TIGHTEN ID8 SCREWS

**4**

ASSEMBLY  
MONTAJE



**8 10** APRETAR TORNILLOS ID8 Y ID10  
TIGHTEN ID8 AND ID10 SCREWS