

HONDA CBR1000RR FIREBLADE / SP '20-

MOUNTING INSTRUCTIONS VIDEO

REF 20508

FRONTAL GP SPOILER / ALERON FRONTAL GP



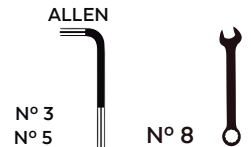
1 Person



15 min



EASY



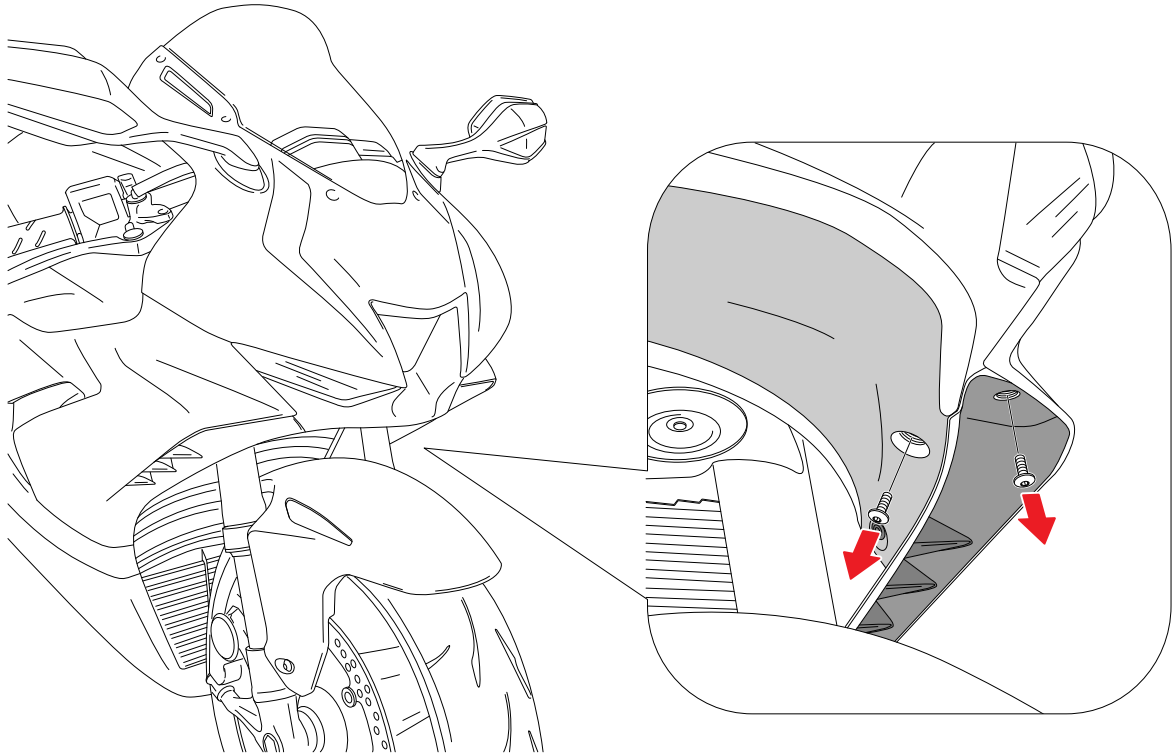
ID.	PIEZA/PART	DESCRIPCIÓN	DESCRIPTION	QTY.	REF.:
1		Base alerón (ABS)	Main spoiler (ABS)	1	10850JM3
2		Soporte metálico Izquierdo (L)	Left Metal support (L)	1	SOPOR2P7-L20508
3		Soporte metálico Derecho (R)	Right Metal support (R)	1	SOPOR2P7-R20508
4		Pieza soporte alerón (Tamaño pequeño)	Spoiler support piece (small size)	2	SOPOR-I---20431
5		Deflector derecho	Right deflector	1	10851A/N/RM3
6		Deflector izquierdo	Left deflector	1	10851A/N/RM3
7		Tapon tornillo M5 DIN7991	M5 DIN7991 screw cap	8	TAPON-----92
8		Tornillo allen M5x30 Ø11 ISO 7380	M5x30 Ø11 ISO 7380 allen screw	4	TORNI-I7380-767
9		Casquillo Ø13xØ8,5x9mm	Ø13xØ8,5x9mm arrowhead	4	CASQUI-----777
10		Tornillo M5x16 DIN7991 (negro)	M5x16 DIN7991 screw (black)	4	TORNI-D7991-867
11		Tornillo M5x12 DIN7991 (Negro)	M5x12 DIN7991 screw (black)	4	TORNI-D7991-611
12		Tuerca autoblocante M5	M5 lock Nut	4	TUERCA-D982-746
13		Arandela de goma Ø4,5xØ11x2mm	Ø4,5xØ11x2mm rubber washer	8	ARAND-EPDM--722
14		Tope de goma Ø3,7-3,8x3,2mm	Ø3,7-3,8x3,2mm bumper foot	2	TOPE--POF-40022
15		Arandela de nylon M5	M5 nylon washer	4	ARNV0000000245
16		Lápiz AP1111 Adhesion promoter	AP1111 adhesion promoter Pen	1	KITNETEJA3M----

HONDA CBR1000RR FIREBLADE / SP '20-

INSTRUCCIONES DE MONTAJE - MOUNTING INSTRUCTIONS - MONTAGEANLEITUNG

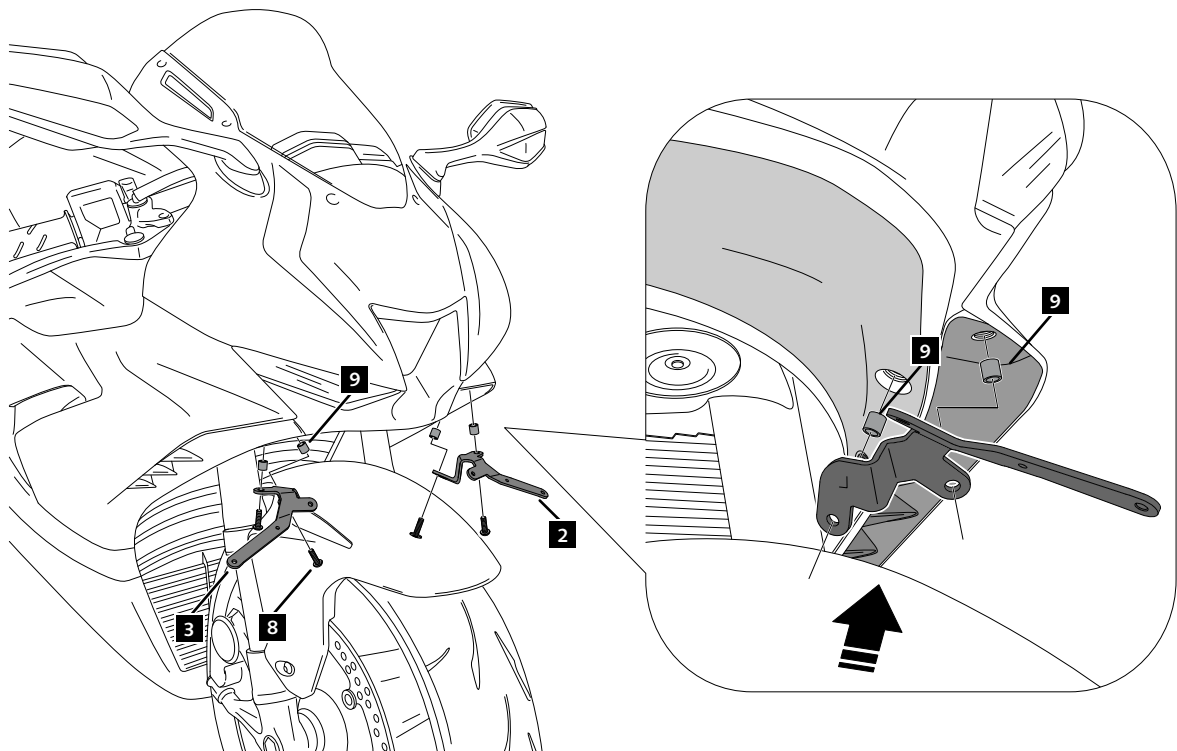
1

**DISASSEMBLY
DESMONTAJE**



2

**ASSEMBLY
MONTAJE**

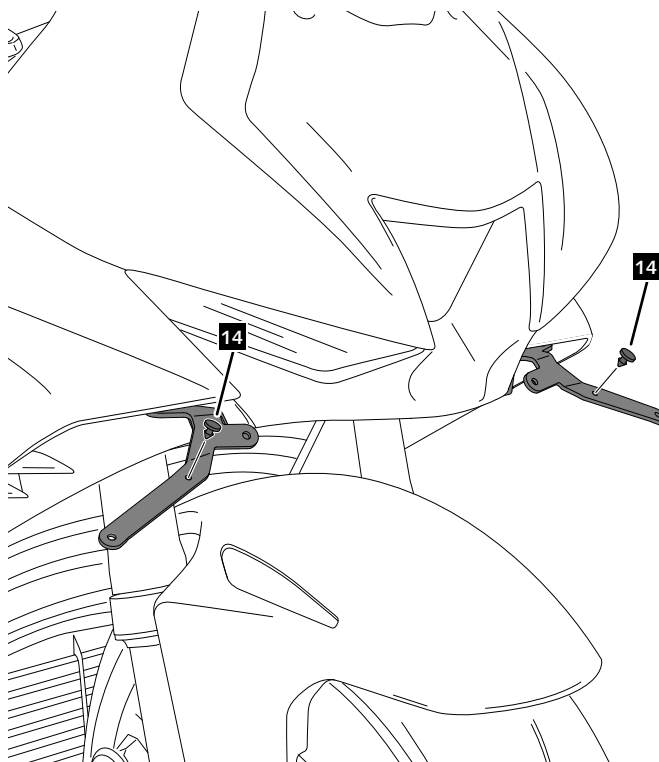


HONDA CBR1000RR FIREBLADE / SP '20-

INSTRUCCIONES DE MONTAJE - MOUNTING INSTRUCTIONS - MONTAGEANLEITUNG

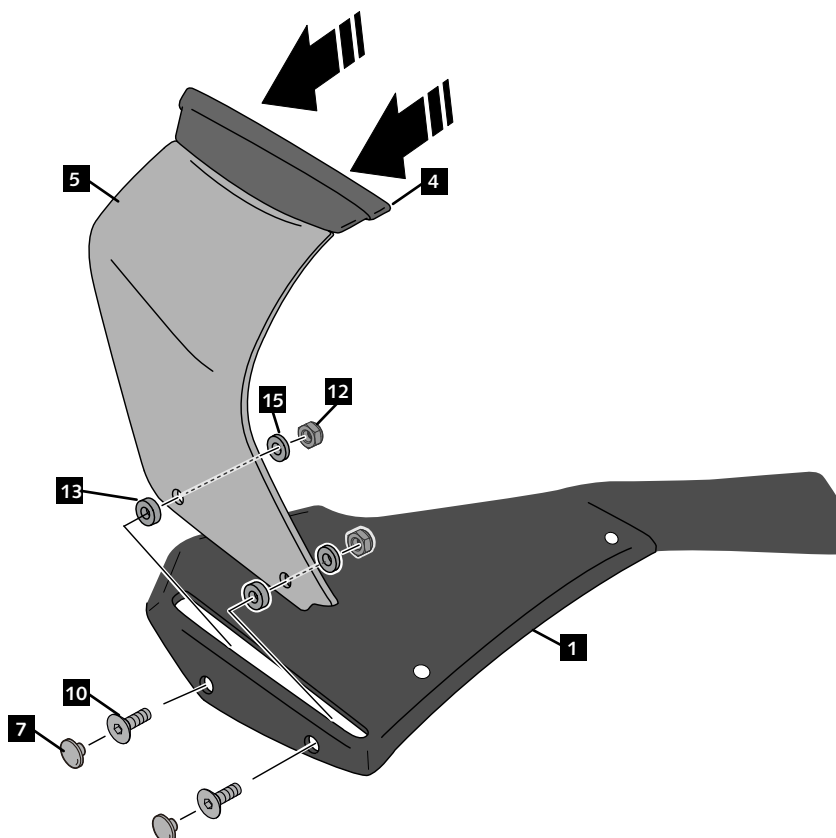
3

ASSEMBLY
MONTAJE



4

ASSEMBLY
MONTAJE

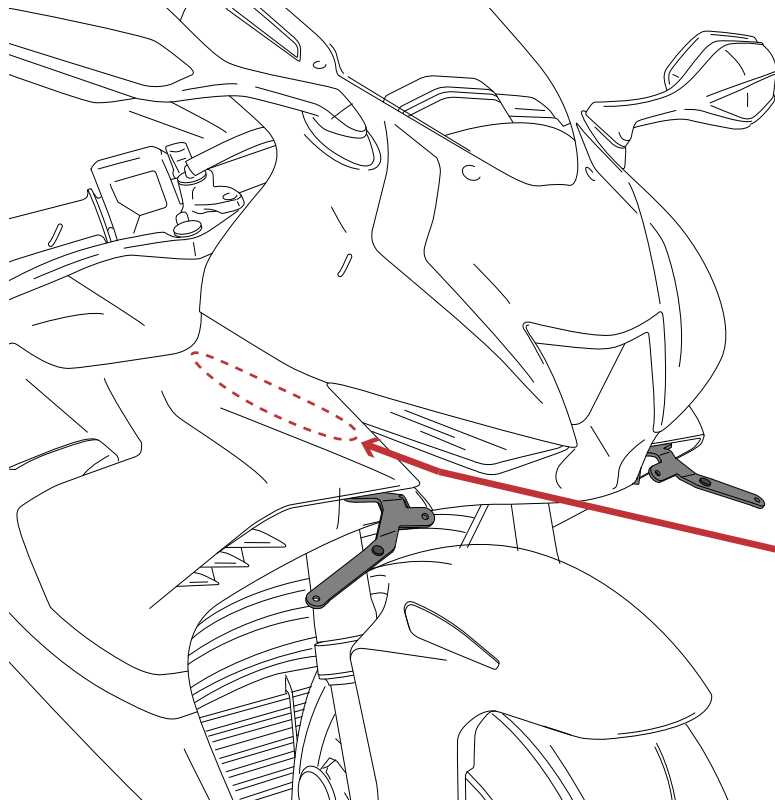


HONDA CBR1000RR FIREBLADE / SP '20-

INSTRUCCIONES DE MONTAJE - MOUNTING INSTRUCTIONS - MONTAGEANLEITUNG

5

ASSEMBLY
MONTAJE



PRESS HARD THE PEN
UNTIL THE GLASS INSIDE
BREAKS AND
THE FLUID FLOWS



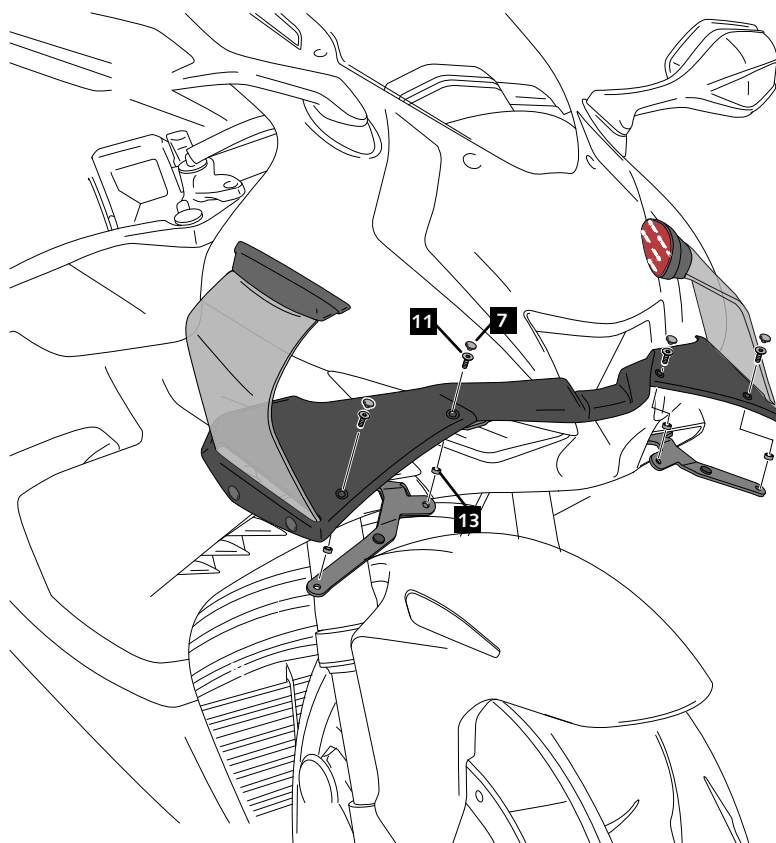
APPLY THE PEN
ONLY ON SPOILER
SUPPORT PIECE
AREA.



CHECK IS COMPLETELY DRY
BEFORE START.

6

ASSEMBLY
MONTAJE

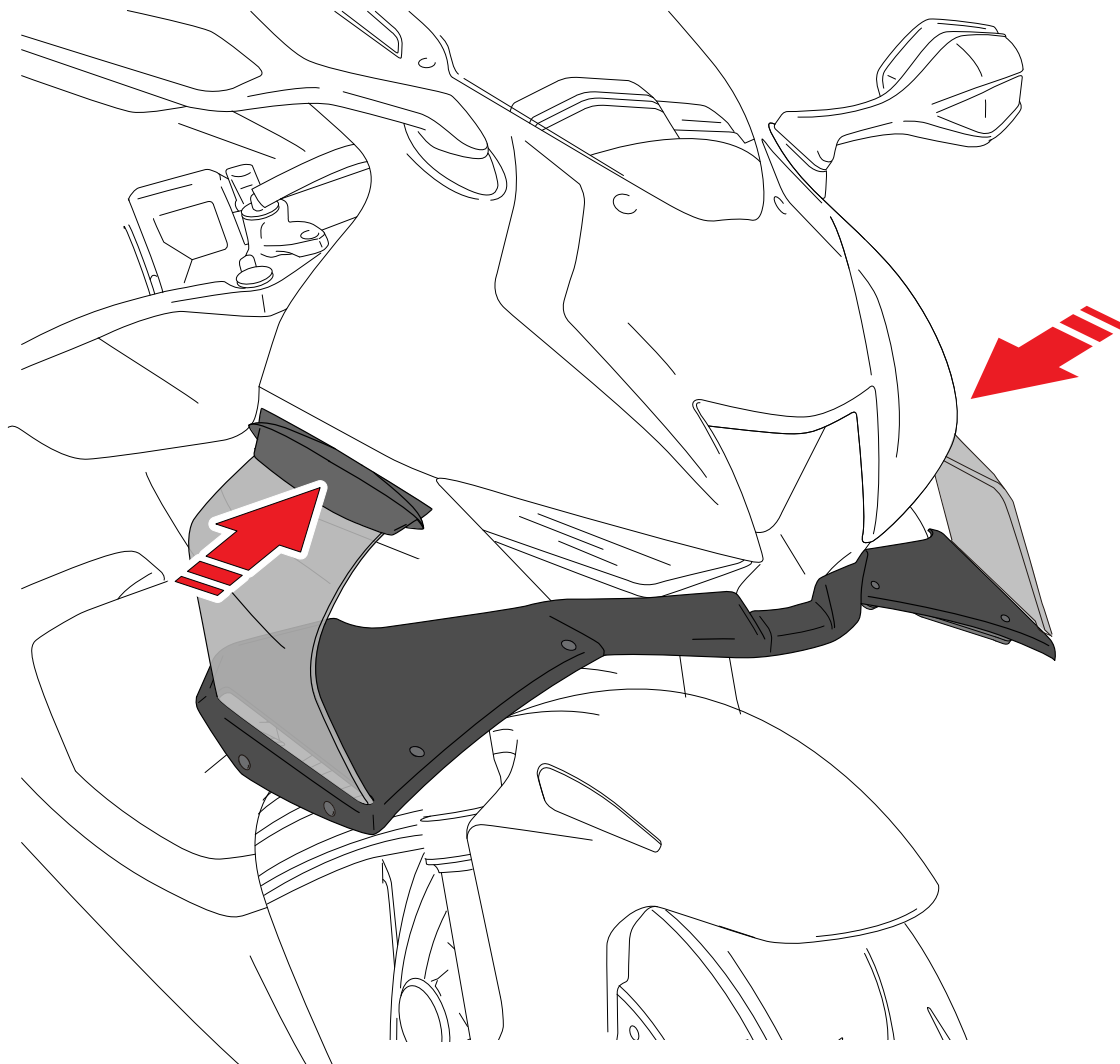
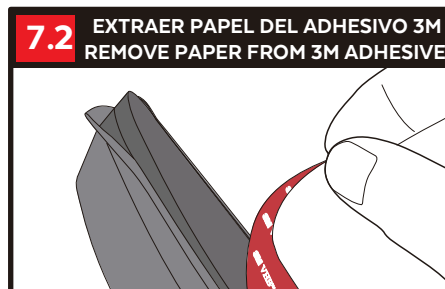
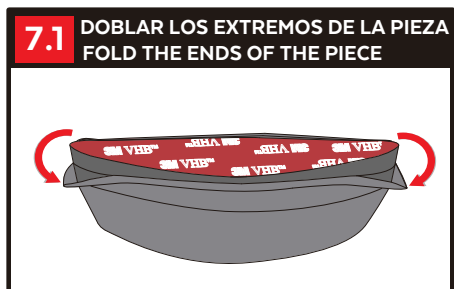


HONDA CBR1000RR FIREBLADE / SP '20-

INSTRUCCIONES DE MONTAJE - MOUNTING INSTRUCTIONS - MONTAGEANLEITUNG

7

ASSEMBLY
MONTAJE



ID.4 APPLY PRESSURE ON ADHESIVE AREA FOR
1 MINUT

HONDA CBR1000RR FIREBLADE / SP '20-

INSTRUCCIONES DE MONTAJE - MOUNTING INSTRUCTIONS - MONTAGEANLEITUNG

8

ASSEMBLY
MONTAJE

WAIT 24 HOURS



CHECK THE CORRECT ADHESION
OF THE 3M DOUBLE SIDE
SELF-ADHESIVE TAPE
TO THE FAIRING. ENSURE THAT
THE ENTIRE SURFACE
IS WELL ADHERED

9

ASSEMBLY
MONTAJE

DESDOBLAR LOS EXTREMOS DE LA PIEZA
UNFOLD THE ENDS OF THE PIECE

