

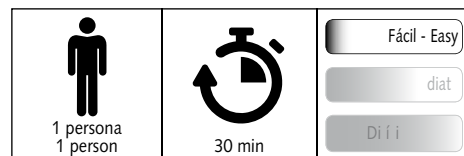
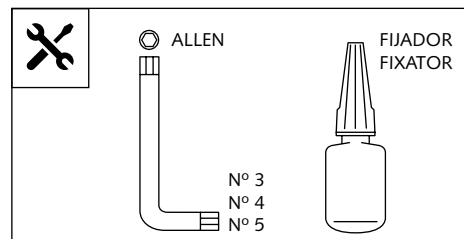
GUARDABARROS TRASERO ADAPTABLE A - REAR MUDGUARD ADAPTABLE TO -
HINTERRADABECKUNG FÜR
DUCATI SCRAMBLER

NO COMPATIBLE PARA MODELOS "DESERT SLED" I " SIXTY2"
NOT COMPATIBLE WITH "DESERT SLED" AND " SIXTY2" MODELS



Ref.: 9165 J
(color negro / black colour)

Ref.: 9165 C
(color carbono / carbon look)



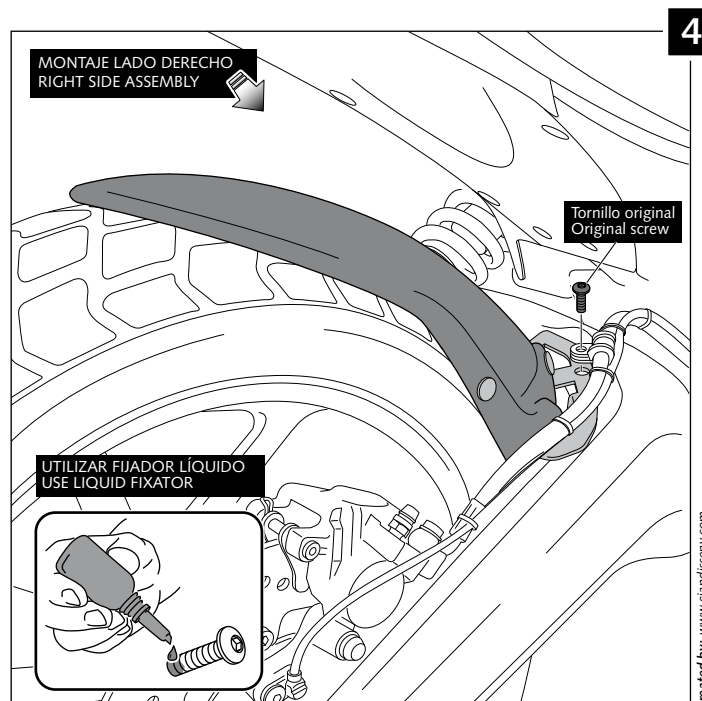
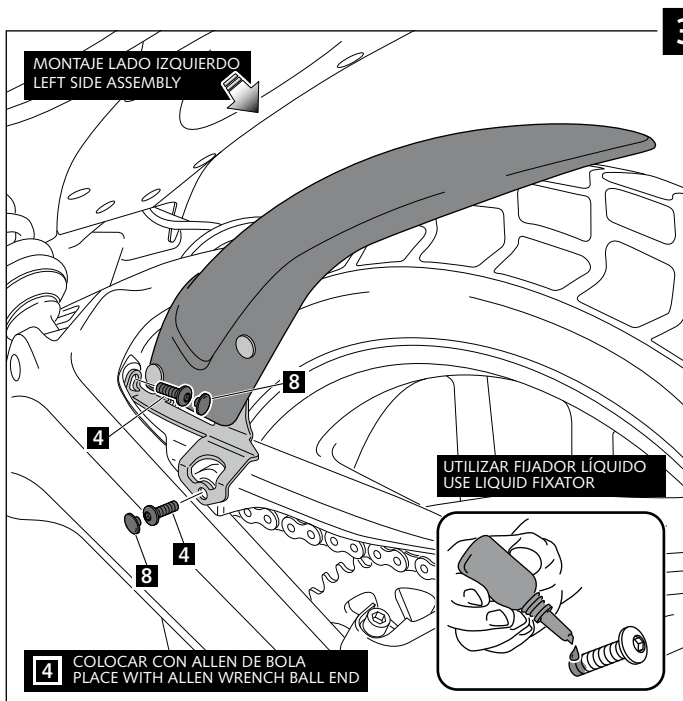
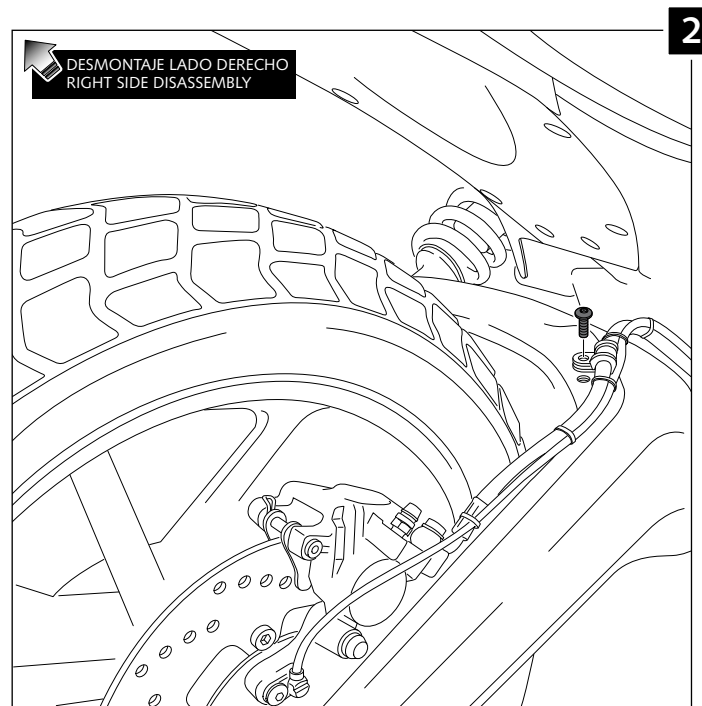
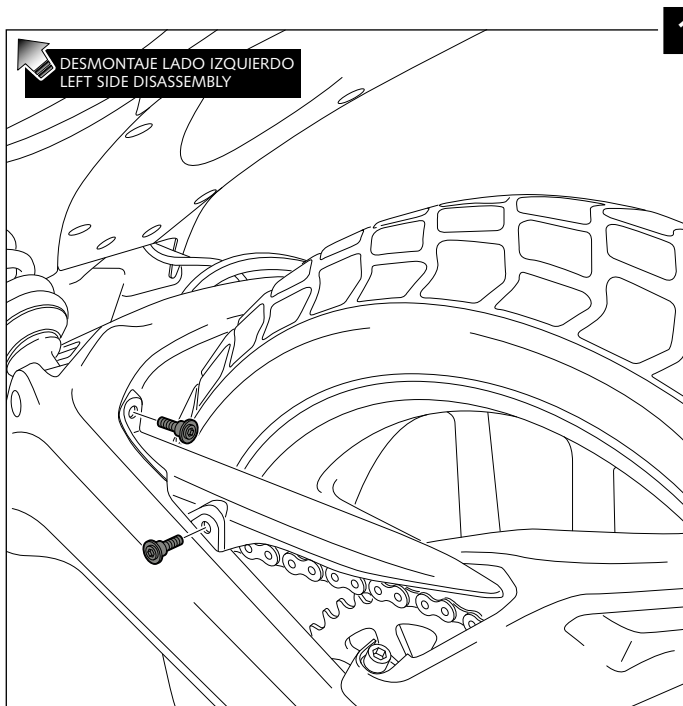
ID.	PIEZA / PART	DESCRIPCIÓN	DESCRIPTION	QTY.
1		Guardabarros trasero	Rear mudguard	1
2		Soporte metálico derecho (R)	Right metal support (R)	1
3		Soporte metálico izquierdo (L)	Left metal support (L)	1
4		Tornillo Allen M5x16 Ø11 ISO 7380	M5x16 Ø11 ISO 7380 Allen screw	2
5		Casquillo con valona Ø12 x Ø6.8 x 7,3	Ø12 x Ø6.8 x 7,3 busch with flange	4
6		Tornillo Allen M5x12 Ø11 ISO 7380	M5x12 Ø11 ISO 7380 Allen screw	4
7		Tapón tornillo M5 ISO 7380	M5 ISO 7380 Allen screw cap	6
8		Silentblock Ø12 x Ø6 x 9	M5 Ø12 x Ø6 x 9 Silentblock	4

GUARDABARROS TRASERO ADAPTABLE A - REAR MUDGUARD ADAPTABLE TO -
 HINTERRADABECKUNG FÜR

DUCATI SCRAMBLER

NO COMPATIBLE PARA MODELOS "DESERT SLED" I " SIXTY2"
 NOT COMPATIBLE WITH "DESERT SLED" AND " SIXTY2" MODELS

INSTRUCCIONES DE MONTAJE - MOUNTING INSTRUCTIONS - MONTAGEANLEITUNG



GUARDABARROS TRASERO ADAPTABLE A - REAR MUDGUARD ADAPTABLE TO -
 HINTERRADABECKUNG FÜR

DUCATI SCRAMBLER

NO COMPATIBLE PARA MODELOS "DESERT SLED" I " SIXTY2"
 NOT COMPATIBLE WITH "DESERT SLED" AND " SIXTY2" MODELS

INSTRUCCIONES DE MONTAJE - MOUNTING INSTRUCTIONS - MONTAGEANLEITUNG

DESPIECE
 EXPLOTING

6 Par de apriete - 3 Nm
 Tightening torque - 3Nm

UTILIZAR FIJADOR LÍQUIDO
 USE LIQUID FIXATOR

